



MY2019+ Sprinter – Swivel Seat Wiring Harness Routing Technical Bulletin

Version 3/23/2022
Mercedes-Benz Vans, LLC

Mercedes-Benz



Notice

Mercedes-Benz USA, LLC does not warrant the accuracy of the information contained in this bulletin and reserves the right to modify or append this bulletin without prior notification. Mercedes-Benz disclaims all liability associated with the provision of this bulletin.

This bulletin is not intended to serve as a work instruction, but merely to provide some helpful information for upfitters to take into consideration before retrofitting or modifying a Mercedes-Benz or Freightliner Sprinter.

Prior to making any modification to or installing any equipment in or on a Mercedes-Benz or Freightliner Sprinter, you should review and insure compliance with all applicable laws and regulations, consult with Upfitter Management Vans for additional and updated information, and read the Body & Equipment Guidelines (BEG) for Sprinter Model Series 907.

Upfitter Management Vans Contacts:

For information or upfitter inquiries
please submit a request via our website:

www.upfitterportal.com

MY2019+ Sprinter – Swivel Seat Wiring Harness Routing

Overview

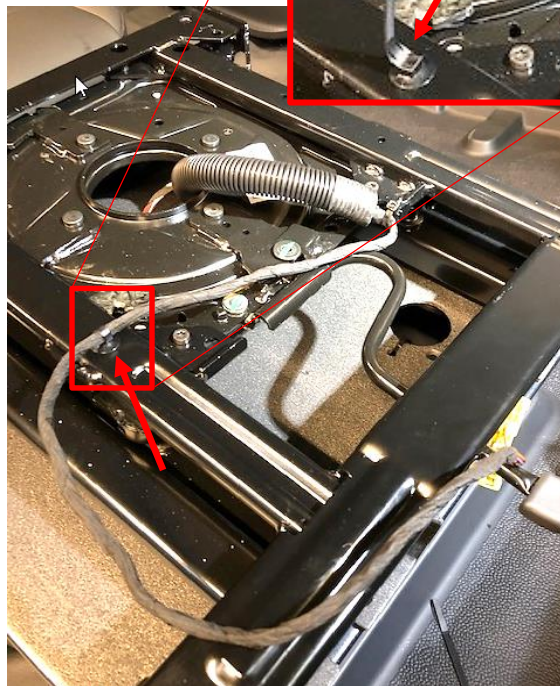
- This bulletin serves as a guide for upfitters to correctly route seat wiring harness on vehicles with front swivel seats. Any improper routing or mounting of the swivel seat wiring harness can cause the harness to be pinched and/or damaged while adjusting the seat position. If the wiring harness becomes pinched and/or damaged during adjustment of the swivel seat, it is possible that the seat-mounted side airbag may either deploy inadvertently or may not deploy as designed in the event of a crash.
- Following instructions are applicable for Sprinters produced until March 31, 2022 with swivel seats. Please note Sprinters produced from April 1, 2022 will have a different wiring harness routing for swivel seat installed from the factory.
- Before performing any work, ensure that the starter battery main switch (code E30) is disconnected.

MY2019+ Sprinter – Swivel Seat Wiring Harness Routing

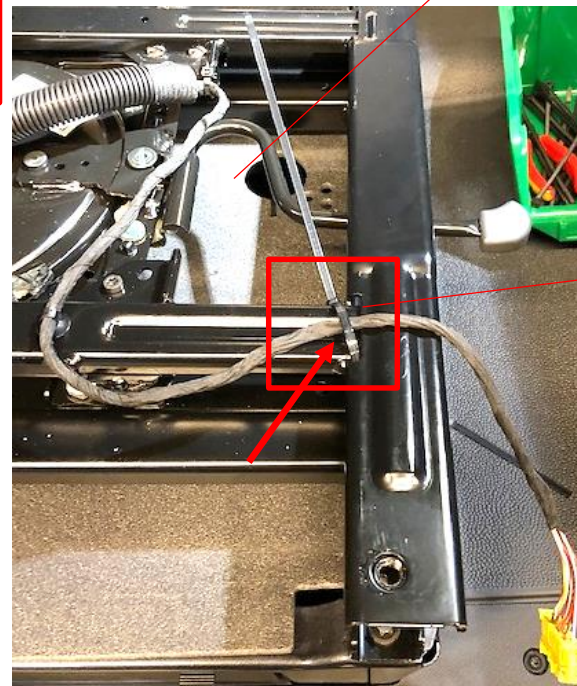
Passenger Seat – SR9



Passenger swivel seat base with seat harness unsecured (yellow connector).



Insert the push mount cable tie A0009956790 into the marked hole. Tighten the cable tie across the seat harness.



Insert the cable tie A0029972490 through the hole on the swivel seat frame and tighten across the seat harness.



Final status

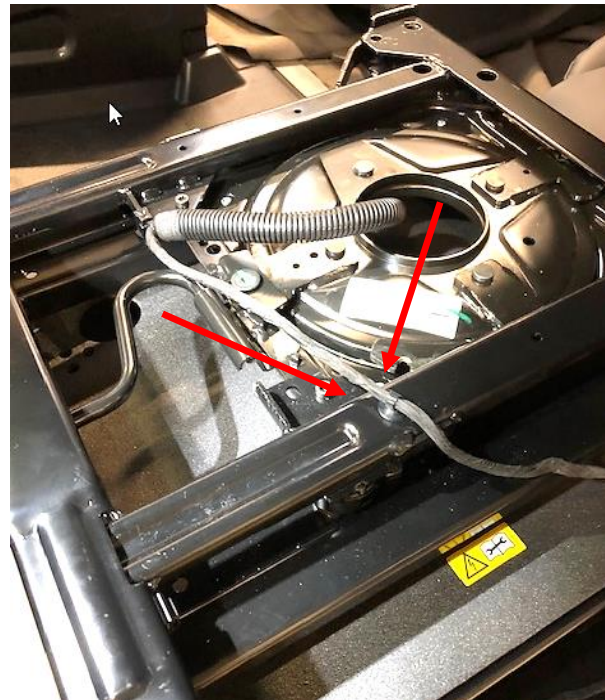


MY2019+ Sprinter – Swivel Seat Wiring Harness Routing

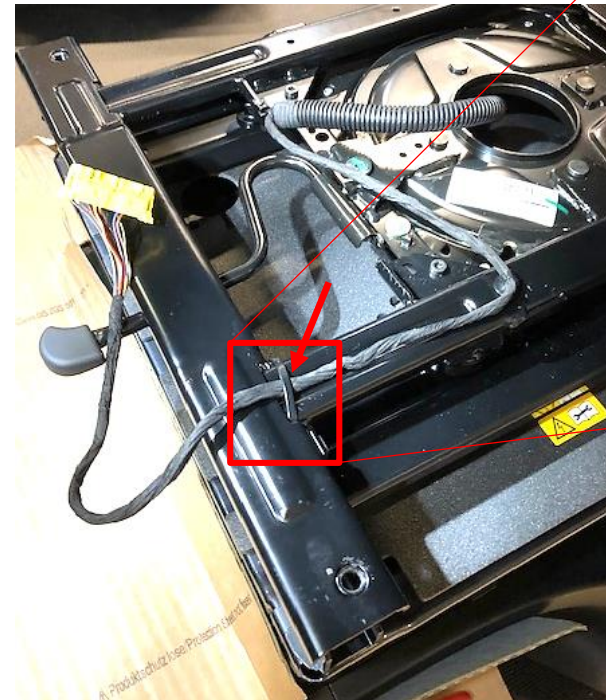
Driver Seat – SR8



Driver swivel seat base with seat harness unsecured (yellow connector).



Insert the push mount cable tie A0009956790 into the marked hole. Tighten the cable tie across the seat harness.



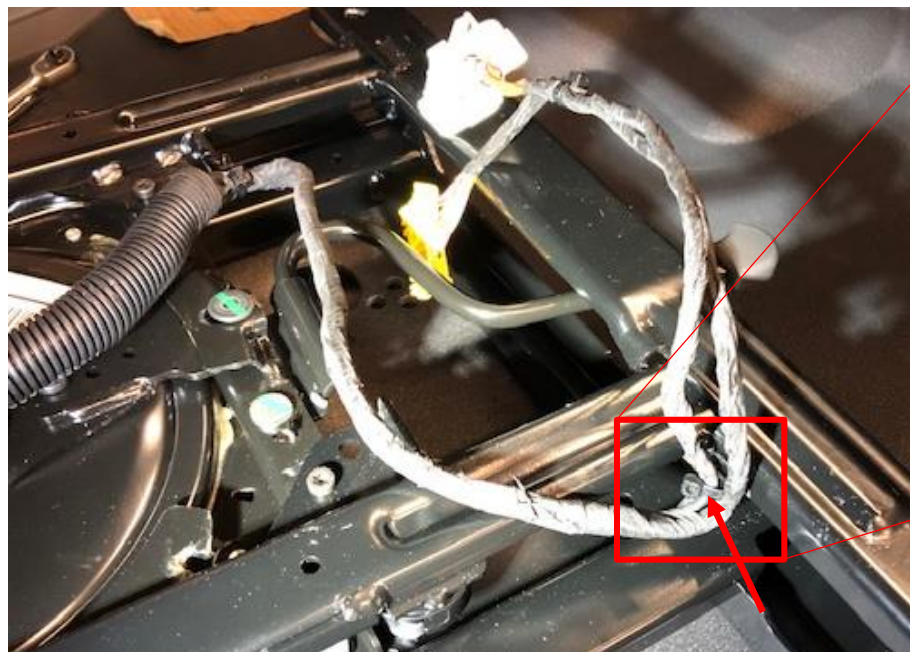
Insert the cable tie A0029972490 through the hole on the swivel seat frame and tighten across the seat harness.



MY2019+ Sprinter – Swivel Seat Wiring Harness Routing Passenger Seat – SR9 with SF2 (Electrically Adjustable)

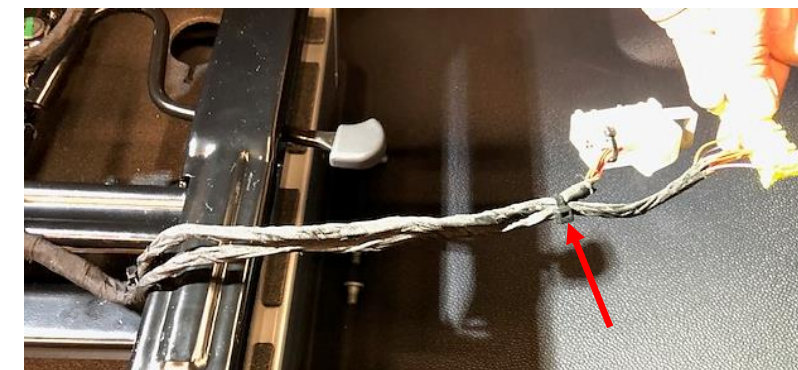


Passenger swivel seat base with seat harness unsecured (yellow and white connector).



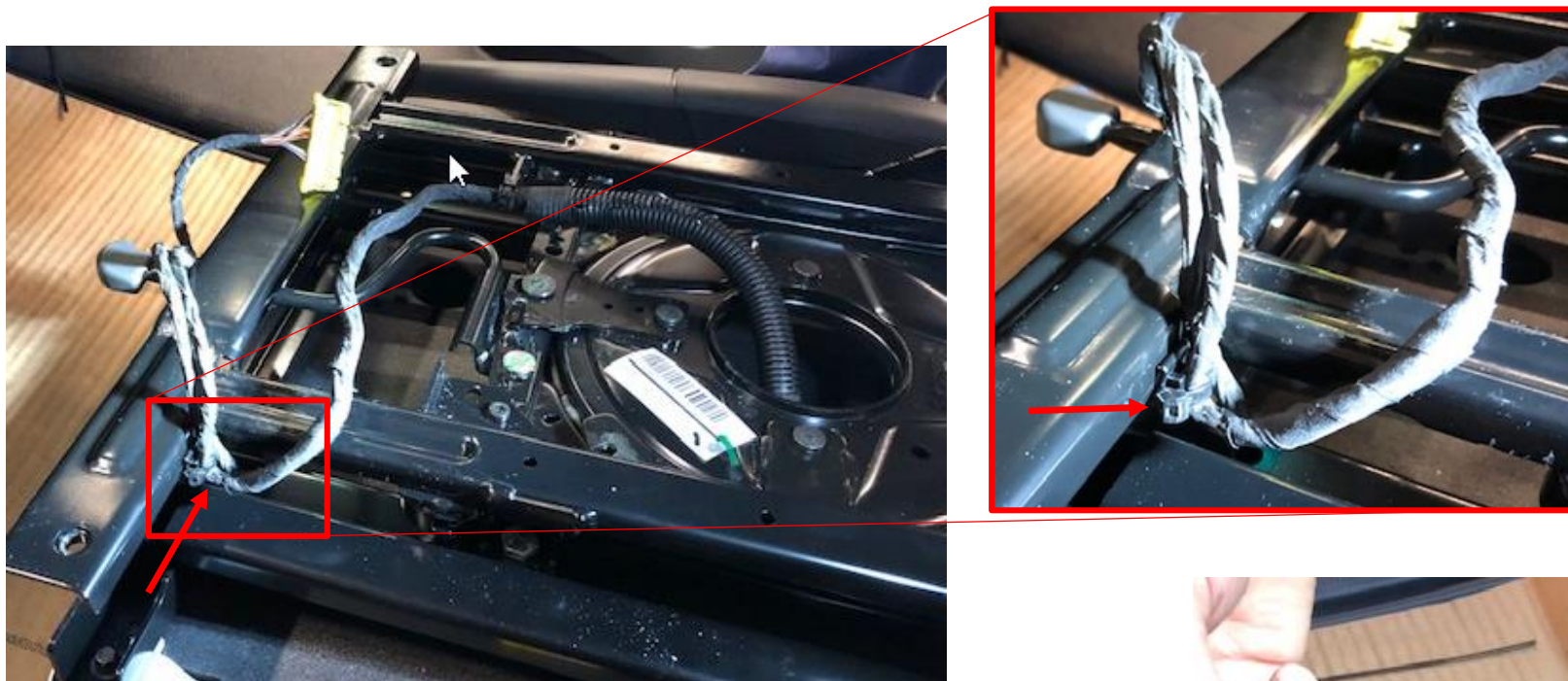
Position the seat harness to the side of the swivel seat frame as shown above and secure the seat harness with push mount cable tie.

Place the two seat harnesses parallel to each other and secure the two harnesses together with cable tie A0029972490.



MY2019+ Sprinter – Swivel Seat Wiring Harness Routing

Driver Seat – SR8 with SF1 (Electrically Adjustable)



Position the seat harness to the side of the swivel seat frame as shown above and secure the seat harness with push mount cable tie.

Place the two seat harnesses parallel to each other and secure the two harnesses together with cable tie A0029972490.

